

ESD AND LATCH-UP TEST SERVICES

- AUTOMATED ESD AND LATCH-UP TESTING
- COMPONENTS AND SYSTEMS
- IN-HOUSE FAILURE ANALYSIS
- VF-TLP ESD PROTECTION EVALUATION
- IN-HOUSE S/W AND INTERFACE DEVELOPMENT

ESD AND LATCH-UP TEST SERVICES



ESD TESTING OF ELECTRONIC COMPONENTS

- ESD protection circuitry test of IC's and small modules
- HBM and MM testing up to 8kV on Mk.2 systems
- CDM testing up to 2kV on RCDM-3 and Orion3 systems
- Test according JEDEC-ESDA-Q100-MIL-IEC standards
- Scimitar™ software for test control and data processing



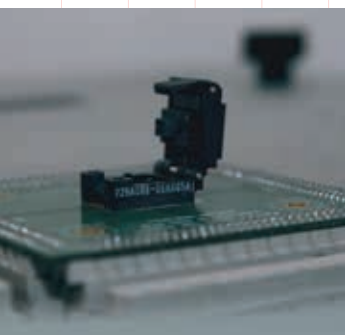
ESD TESTING OF ELECTRONIC SYSTEMS

- ESD protection circuitry test of electronic systems
- Air- and Contact-discharge up to 30kV with NSG-438
- Test according IEC 61000-4-2 and ISO 10605 standards
- All ESD gun discharge networks available
- Dedicated system setup and GND plates



LATCH-UP TESTING OF INTEGRATED CIRCUITS

- Latch-up (LU) phenomena sensitivity test of IC's
- LU testing with up to 5 V/I power supply domains
- 64k per pin vector memory and 512 pins on our Mk.2 systems
- Test according JEDEC and Q100 standards up to +200°C
- Scimitar™ software for test control and data processing



ESD PROTECTION CIRCUIT CHARACTERIZATION OF IC'S

- ESD protection circuit characterization of IC's
- VF-TLP up to 30A on IC and wafers up to 200 mm
- 2-port measurement
- 20GS/s pulse sampling
- 50 Ohm system, 0.1-50ns pulse rise time, 1-100ns pulse width

MASER Engineering is an ESDA standardization committee member.