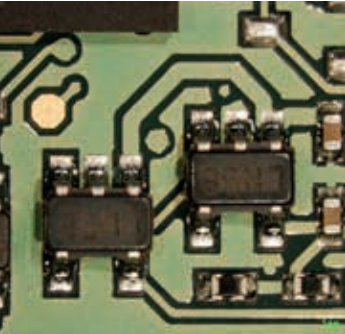




IPC PCB INSPECTION SERVICE

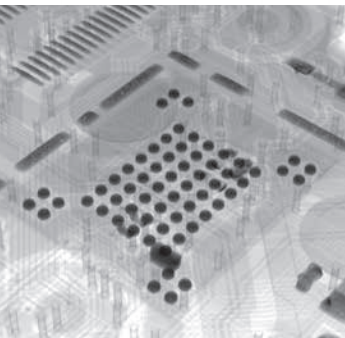
- **IPC-A-600 BARE PCB INSPECTION**
- **IPC-A-610 ASSEMBLED PCB INSPECTION**
- **INSPECTION ACCORDING ALL IPC CLASSES**
- **MULTIPLE HIGH QUALITY INSPECTION TECHNIQUES**
- **INDEPENDENT QUALITY ASSESSMENT**

IPC PCB INSPECTION SERVICE



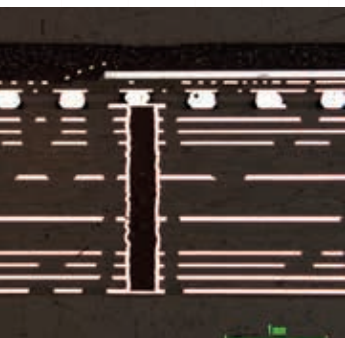
IPC-A-600 / IPC-A-610 PCB/PCBA INSPECTION

- IPC-A-600 - Acceptability of Printed Circuit Boards is an inspection criterion, setting the level of acceptance criteria for each class of product
- IPC-A-610 - Acceptability of Electronic Assemblies is the most widely used standard published by the IPC Association
- It has an international reputation as the source for end product acceptance criteria for consumer and high reliability printed wiring assemblies



INSPECTION CLASSIFICATION

- Class 1 - General Electronic Products
- Class 2 - Dedicated Service Electronic
- Class 3 - High Performance / Harsh environment Electronic Products



ANALYSIS TECHNIQUES

- Non-destructive
 - Optical inspection
 - X-ray inspection
- Destructive
 - Mechanical cross-sectioning
 - Optical- and SEM inspection



SUMMARY

- Quality assessment of PCB design, manufacturing and assembly
- Analysis of the design, construction, materials, solder voids, cracks in the metallization, solder wetting, via filling, contamination, delamination and second source.